

# Troubleshooting Your Network Without Breaking the Bank

## Introduction

On today's corporate networks, managing performance is as important as ever. With high-bandwidth applications such as video and VOIP consuming large amounts of bandwidth, and with applications being deployed at remote locations, IT organizations are finding it critical to monitor application performance closely, optimize usage of the network, and make sure that changes to the IT environment do not degrade the end-user experience.

As a network manager, application manager or security manager, you need systems in place that can collect data across your WAN, continuously analyze the data to discover problems, and allow you to troubleshoot issues as soon as they occur. A packet capture and analysis solution is an essential part of your toolset, since it provides the most granular level of information and can help troubleshoot the toughest problems.

An ideal packet capture solution would:

- Collect data everywhere on your network, including data centers, branch offices and mobile devices
- Offer scalable, efficient and easy-to-use packet analysis capabilities
- Leverage the network and application infrastructure you already have in place

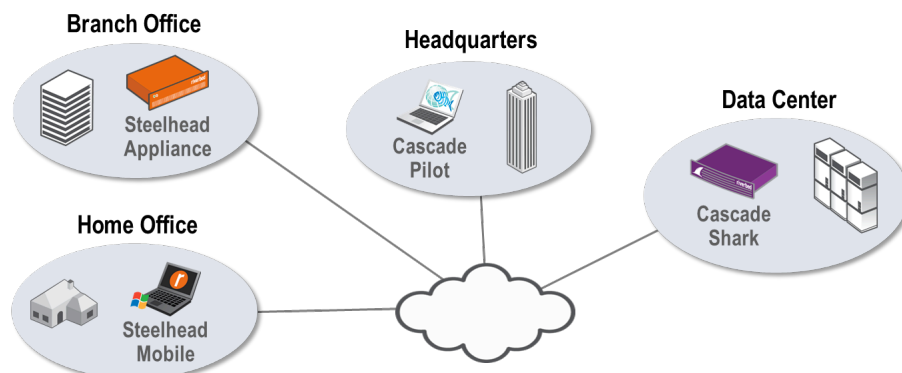
Riverbed has fundamentally changed the economics of network performance management.

Now you can enjoy a fully distributed, easy-to-use network analysis solution without spending a fortune buying and maintaining additional hardware throughout your network.

## BENEFITS

- Get a fully-distributed packet capture solution without adding hardware at your branch offices
- Troubleshoot performance and security issues with an intuitive, visual packet analysis console
- Enjoy the only solution in the industry to be fully integrated with Wireshark®
- Instantly increase the return on your Riverbed® investment

## The Riverbed Application-Aware Network Performance Management Solution



Riverbed devices on your network provide a fully distributed network analysis solution

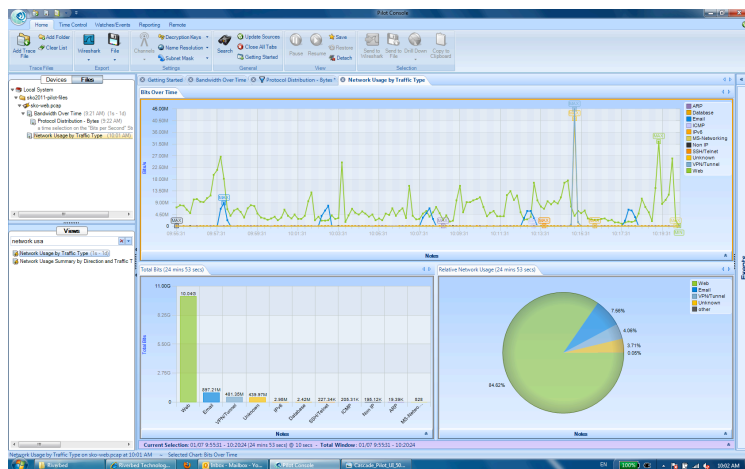
The Riverbed application-aware network performance management solution supports packet capture at every location on your network:

- **Cascade® Shark™ appliances** for high-performance recording in the data center
- **Steelhead® appliances** in branch offices
- **Steelhead Mobile software** for mobile users in home offices or on the road

Each of these products has built-in packet capture functionality that you can control remotely. Cascade Shark provides continuous, high-speed packet capture for granular, real-time and post-event forensic analysis, based on high-performance 1GbE and 10GbE capture cards. Cascade Shark performs real-time indexing and analysis of packet data directly on the appliance, eliminating the need to export large trace files across the network.

Built-in packet capture capabilities in Steelhead products allow Riverbed WAN optimization customers to use previously deployed devices as a distributed network analysis solution, without adding any hardware at remote locations. Steelhead appliances capture both WAN traffic and remote LAN traffic, and they have embedded Cascade Shark functionality, so packet indexing and remote analysis are done directly on the appliance. Now you can have network-wide, high-performance troubleshooting based on the hardware you already own.

For packet analysis, visualization and reporting, Riverbed offers **Cascade Pilot™**, a powerful analysis console that seamlessly integrates with all Riverbed packet capture products. Cascade Pilot is based on Wireshark®, the world's most popular network protocol analyzer, so it provides the broadest support and the quickest learning curve. Cascade Pilot has many powerful network analysis capabilities, including:



Cascade Pilot visualizes network traffic with interactive views and reports

- An intuitive, visual interface, with a broad selection of interactive views and reports to meet your troubleshooting requirements.
- Initiate packet capture jobs on remote appliances directly within the user interface.
- Quickly and easily open multi-terabyte network recordings located on remote appliances.
- Troubleshoot local or remote, live or offline traffic sources using drag-and-drop multi-level drill-down.
- Visualize local or remote traffic metrics by moving back in time through large data sets with just a few mouse clicks.

## It's Easy to Get Started

A distributed packet capture and analysis solution is a key enabler of high performance and security for your critical business applications. The distributed nature of the Riverbed solution is especially valuable for troubleshooting WAN optimization deployments, LAN traffic at remote offices, and other scenarios where data collection in the data center may not give the full performance picture. Since the administrator can perform analysis at a central location, the solution does not create any new work for branch office staff.

Dedicated capture hardware at remote locations is often cost-prohibitive. Thankfully, remote capture can be inexpensive and easy on a network where Riverbed Steelhead, Steelhead Mobile Cascade Shark and Cascade Pilot are deployed. Contact Riverbed for more information about monitoring and troubleshooting without breaking the bank. Visit [www.riverbed.com](http://www.riverbed.com) for more information.

## About Riverbed

Riverbed is the IT performance company. WAN optimization solutions from Riverbed liberate businesses from common IT constraints by increasing application performance, enabling consolidation, and providing enterprise-wide network and application visibility – all while eliminating the need to increase bandwidth, storage or servers. Thousands of companies trust Riverbed to deliver greater productivity and cost savings by making their IT infrastructure faster, less expensive and more responsive. Riverbed solutions are also available as managed services through select providers. Additional information about Riverbed (NASDAQ: RVBD) is available at [www.riverbed.com](http://www.riverbed.com).



**Riverbed Technology, Inc.**  
 199 Fremont Street  
 San Francisco, CA 94105  
 Tel: (415) 247-8800  
[www.riverbed.com](http://www.riverbed.com)

**Riverbed Technology Ltd.**  
 Farley Hall, London Rd., Level 2  
 Binfield  
 Bracknell, Berks RG42 4EU  
 Tel: +44 1344 354910

**Riverbed Technology Pte. Ltd.**  
 391A Orchard Road #22-06/10  
 Ngee Ann City Tower A  
 Singapore 238873  
 Tel: +65 6508-7400

**Riverbed Technology K.K.**  
 Shiba-Koen Plaza, Bldg. 9F  
 3-6-9, Shiba, Minato-ku  
 Tokyo, Japan 105-0014  
 Tel: +81 3 5419 1990