

# Riverbed Whitewater and Amazon S3

## Accelerating cloud storage for enterprise data protection

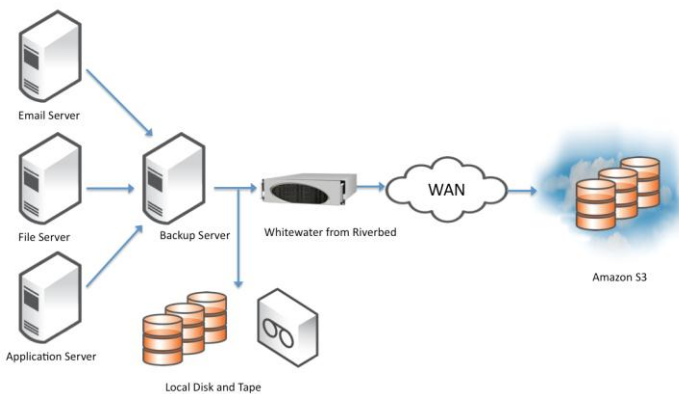
Today's ongoing and rapidly-accelerating growth in enterprise data comes at the same time that companies of all sizes are focused on cost reductions. How can customers balance these seemingly incompatible goals? In particular, how can IT departments keep up with the volume of new enterprise data—more and more of it critical and subject to compliance—and continue to meet data protection and availability service levels?

Data protection is a mature practice, and existing solutions are well optimized for fast, reliable backup, typically to local disk, tape, or virtual tape libraries (VTLs). But traditional backup strategies are always limited by an IT organization's ability to accurately size, trend, source, budget for and manage multiple disks, tapes, and libraries, in different locations around the globe, and often on different platforms. Moreover, backup data often needs to be restored to a new location or a distant one, straining corporate WAN links.

Many innovative enterprises are turning to cloud storage to meet both demands. Cloud storage promises an elastic "pay-as-you-go" storage pool for backups and archives, which not only reduces expensive up-front backup disk and tape costs, but eliminates the need to maintain secondary sites for off-site disk or tape storage.

### Riverbed Whitewater

Riverbed Whitewater allows enterprises to meet cost reduction and growing data management goals by using the scalability and reliability of cloud storage with a customer's existing data protection strategy. Whitewater is a cloud storage accelerator that secures, optimizes, and accelerates backup and recovery to the public cloud.



**Riverbed Whitewater and Amazon S3 typical deployment**

A Joint Solution by Riverbed and



### BENEFITS

Key benefits of the cloud backup storage solution with Whitewater and Amazon S3:

- Easy integration into existing backup infrastructure - Whitewater simply acts as a target for your current backup software, requiring no expensive integration or complex configuration.
- Secure off-site data more effectively- Whitewater encrypts data both in-flight to the Cloud with SSL v3, as well as at rest using 256-bit AES encryption. This dual layer of encryption ensures that any data moved into is protected end-to-end.
- Lower data protection costs by reducing WAN bandwidth and cloud storage requirements
- Reduce data storage requirements by 20x to 50x



Whitewater is essentially cloud storage acceleration in a box. Customers leverage inexpensive, pay-as-you-go cloud storage services, like Amazon S3, for off-site storage of backup data, and enjoy simple configuration, faster data transfers, and built-in security.

Moreover, implementation is non-disruptive: customers can use the same backup and data protection products they use today, the same protocols, and the same schedules and procedures. The only significant operational impact will be the time and effort saved by no longer having to manage off-site disk and tapes.

The cloud becomes a secure and reliable backup target, accessed like any other storage target at the customer's site—but now that backup target can be sized up or down on demand, capacity-optimized and accelerated when Whitewater is paired with a cloud storage service built on Amazon S3.

### Amazon Simple Storage Service (S3)

Amazon Simple Storage Service (S3) is storage for the Internet. It is designed to make web-scale computing easier for developers by providing a simple web services interface that can be used to store and retrieve any amount of data, at any time, from anywhere in the web.

Amazon S3 gives you access to the same highly scalable, reliable, fast, inexpensive data storage infrastructure that Amazon uses to run its own global network of websites.

### Riverbed Whitewater and Amazon S3

Amazon S3 and Riverbed have combined the best of their respective development teams and expertise to deliver both a powerful cloud-optimized storage platform and a cloud-optimized access appliance to enable fast, reliable, secure and simple access to the public cloud.

Key benefits of the cloud backup storage solution with Whitewater and Amazon S3:

- Easy integration into existing backup infrastructure - Whitewater simply acts as a target for your current backup software, requiring no expensive integration or complex configuration.
- Secure off-site data more effectively- Whitewater encrypts data both in-flight to the Cloud with SSL v3, as well as at rest using 256-bit AES encryption. This dual layer of encryption ensures that any data moved into is protected end-to-end.
- Lower data protection costs by reducing WAN bandwidth and cloud storage requirements
- Reduce data storage requirements by 20x to 50x

---

### About Riverbed

Riverbed Technology is the IT performance company. The Riverbed family of wide area network (WAN) optimization solutions liberates businesses from common IT constraints by increasing application performance, enabling consolidation, and providing enterprise-wide network and application visibility – all while eliminating the need to increase bandwidth, storage or servers. Thousands of companies with distributed operations use Riverbed to make their IT infrastructure faster, less expensive and more responsive. Additional information about Riverbed (NASDAQ: RVBD) is available at [www.riverbed.com](http://www.riverbed.com)



**Riverbed Technology, Inc.**  
199 Fremont Street  
San Francisco, CA 94105  
Tel: (415) 247-8800  
[www.riverbed.com](http://www.riverbed.com)

**Riverbed Technology Ltd.**  
Farley Hall, London Rd., Level 2  
Binfield  
Bracknell, Berks RG42 4EU  
Tel: +44 1344 354910

**Riverbed Technology Pte. Ltd.**  
391A Orchard Road #22-06/10  
Ngee Ann City Tower A  
Singapore 238873  
Tel: +65 6508-7400

**Riverbed Technology K.K.**  
Shiba-Koen Plaza, Bldg. 9F  
3-6-9, Shiba, Minato-ku  
Tokyo, Japan 105-0014  
Tel: +81 3 5419 1990