

SOLUTION BRIEF: Riverbed and Radware

A Joint Solution by Riverbed and



THE RADWARE AND RIVERBED JOINT SOLUTION

The Steelhead appliances combined with Radware's Linkproof product enables branch office continuity. The joint solution provides

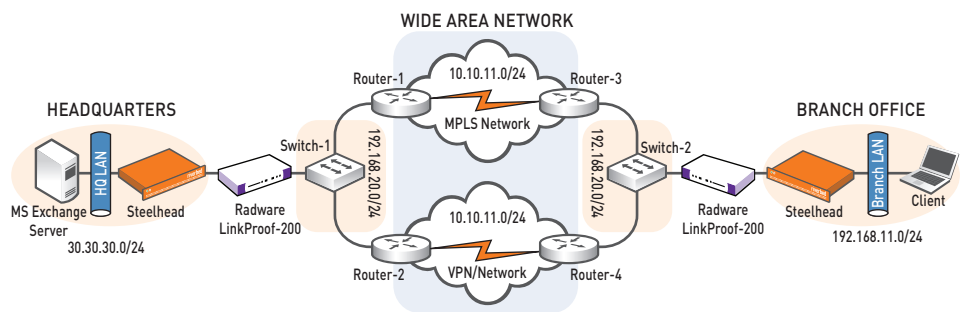
- Uninterrupted LAN-like access to consolidated data centers, other remote locations and the Internet.
- Effortless management and load balancing across multiple ISP connections.
- Increased efficiency of your WAN—bypass bottlenecks and service-provider outages, manage bandwidth consumption
- Increased data security and compliance

Branch Office Business Continuity and Consolidation

Organizations are making the strategic choice to consolidate remote site IT infrastructure into central data centers. The stumbling block to consolidation, however, is the severe impact on application performance as seen by remote users. The problem lies not only with bandwidth but also in the way the applications interact with the server across the WAN. Riverbed's Steelhead appliances systematically addresses each of the issues affecting application performance over the WAN and enables companies to consolidate remote server infrastructure and deliver consistent end-to-end application performance without resorting to expensive and often ineffective upgrades to WAN bandwidth.

Whether a business has chosen to consolidate IT, increase collaboration across wide areas, or both, it's now become even more important to have continuously available, high-performance WAN infrastructure. A single WAN link may no longer be sufficient at many locations. Backup connectivity options such as DSL may be appealing due to their lower cost. Unfortunately, the load-balancing and redundancy controls provided by traditional routing protocols are often too coarse and can lead to inefficient use of these redundant resources and unnecessarily long outages. Radware's LinkProof product is a multi-WAN switch that enables multi homing, load balancing and bandwidth management.

Branch office continuity and consolidation with Riverbed's Steelhead appliance and Radware's LinkProof solution



Radware's LinkProof is a multi-WAN switch that enables

Multi-homing

1. Reliable and continuous Internet access
2. Real-time inbound and outbound link load-balancing
3. Back-up links do not sit idle: use all the bandwidth you're paying for
4. Broad offering to meet your bandwidth needs and budget, mix a match any type of IP options
5. Easier to install & manage than alternative solutions, e.g. BGP

Application smart routing

1. Maximized performance of your Internet links and applications increased user satisfaction by managing all your available bandwidth across multiple links
2. User defined Bandwidth Management based on application type, user, and/or content
3. Integrated security (Intrusion Prevention) protects against malicious attacks at the gateway of your network
4. Graphical link-performance statistics and network security reporting

Real-time link health monitoring, failure detection and traffic redirection:

1. Remove single point of failure (single ISP connection)
2. Patented, end-2-end, real-time link health monitoring, based on both # of hops and end to end latency.
3. Immediate, automatic failover in case of ISP outages
4. Redirect prioritized traffic off poor performance link onto alternative IP link with acceptable latency performance to meet application requirements.

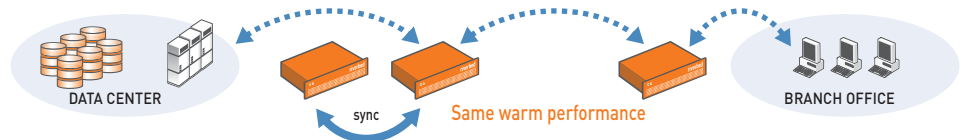
SOLUTION BRIEF: Riverbed and Radware



Steelhead Redundancy

With this centralized IT environment the uptime of Steelhead appliance is critical. Riverbed has introduced a new active, active sync option that will enable complete and consistent LAN-like performance for the critical branch office sites. Steelhead appliances now offer high availability with datastore synchronization whereby

- Both Steelheads can optimize connections
- Both Steelheads share the same segstore data
- Supports both serial and parallel clustering (1:1 mode)

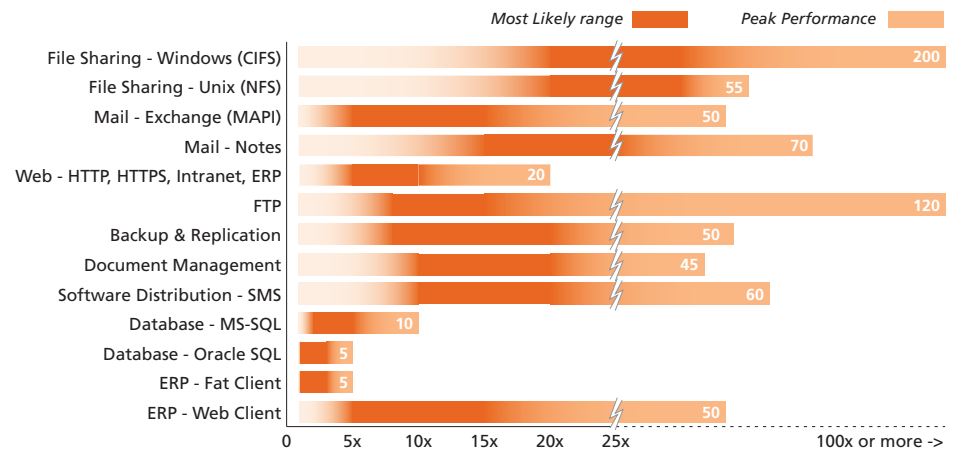


Remote Office Consolidation

Riverbed Steelhead appliances enable true IT consolidation by eliminating remote office infrastructure like tape, file servers resulting in reduced costs and increased operational efficiency. The branch office user continues to experience LAN-like access to the corporate resources as Steelhead appliances optimize both application and transport protocol chattiness, and offer unprecedented bandwidth optimization.

The chart below illustrates the performance of typical enterprise applications across the WAN with Riverbed Steelhead appliances.

Steelhead Appliances Accelerate a Broad Range of Applications



About Riverbed

Riverbed Technology is the performance leader in wide-area data services (WDS) solutions for companies worldwide. By enabling application performance over the wide area network (WAN) that is orders of magnitude faster than what users experience today, Riverbed is changing the way people work, and enabling a distributed workforce that can collaborate as if they were local. Additional information about Riverbed (Nasdaq: RVBD) is available at www.riverbed.com.

About Radware

Radware (NASDAQ:RDWR) is the global leader in integrated application delivery solutions, assuring the full availability, maximum performance and complete security of all business critical networked applications while dramatically cutting operating and -scaling costs. More than 5,000 enterprises and carriers worldwide use Radware application-smart switches to drive business productivity and improve profitability by adding critical application intelligence to their IP infrastructure, making networks more responsive to specific business processes. Radware's APsolute product family provides the most complete set of application front-end, remote access and security capabilities for application-smart networking to ensure faster, more reliable and secure business transactions. Learn more on how Radware application delivery solutions can enable you to get the most of your investments in IT infrastructure and people. www.radware.com.

Riverbed Technology, Inc.
 199 Fremont Street
 San Francisco, CA 94105
 Tel: +1 415 247 8800
 Fax: +1 415 247 8801
www.riverbed.com

Riverbed Technology Ltd.
 1, The Courtyard, Eastern Road
 Bracknell
 Berkshire RG12 2XB
 United Kingdom
 Tel: +44 1344 354 910

Riverbed Technology Pte. Ltd.
 350 Orchard Road #21-01/03
 Shaw House
 Singapore 238868
 Tel: +65 68328082

Riverbed Technology K.K.
 Shiba-Koen Plaza Building 9F
 3-6-9, Shiba, Minato-ku
 Tokyo, Japan 105-0014
 Tel: +81 3 5419 1990