

# SOLUTION BRIEF: SolidWorks PDMWorks Enterprise 2008 SP1 + Riverbed®

A Joint Solution by Riverbed and



## THE SOLIDWORKS AND RIVERBED JOINT SOLUTION

Riverbed and SolidWorks combine to enable a high performance product design and management solution that allows workers everywhere to collaborate across the enterprise. The joint solution offers customers the following benefits:

- Enhanced collaboration and productivity by accelerating access to product designs and data for employees wherever they connect
- Faster product design capabilities speeding time-to-market
- Centralized version control of design data and documents with real-time performance
- Reduced bandwidth utilization resulting in cost-savings for IT

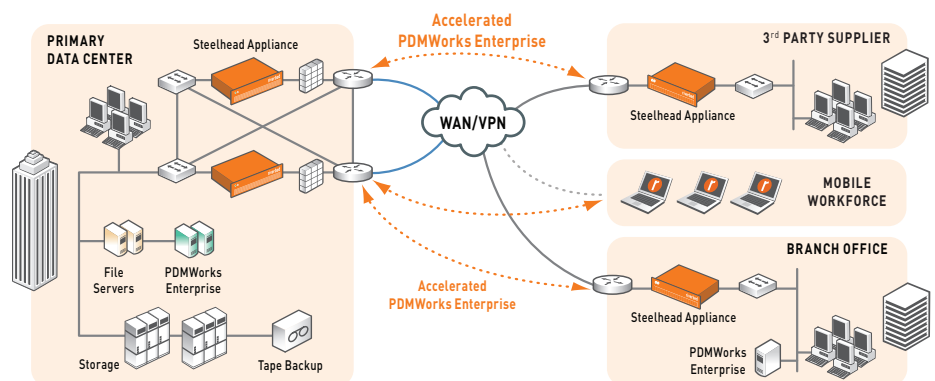
## Improve Collaboration and Productivity with Riverbed and SolidWorks

For organizations leveraging engineering and product design solutions, the ability to collaborate in a timely fashion while ensuring data coherency remains paramount. Multiple individuals or product design teams often share product data and documents across several worksites and require access to the latest information. Without an enterprise-class product data management (PDM) system, design inconsistencies or conflicts can hinder the development process leading to significant project delays and costs.

Leading companies are looking to cut their time-to-market and enhance their collaborative capabilities by utilizing product design management, workflow automation, and data sharing. While a comprehensive design management solution incorporating these features can improve version control and speed the product development lifecycle, organizations can also encounter performance issues accessing data and applications over a wide-area network (WAN).

Jointly, Riverbed® and SolidWorks PDMWorks Enterprise 2008 offer organizations a best of breed solution that delivers enterprise 3D CAD design and PDM capabilities with accelerated application performance over the WAN to enable faster sharing of data and ensure consistent version control across the design process. The result is accelerated design operations, improved productivity, and version consistency.

### Typical SolidWorks PDMWorks Enterprise 2008 & Riverbed Deployment



Caption: Riverbed Steelhead products accelerate SolidWorks performance so employees can collaborate efficiently on product designs.

## Accelerate Product Design and Time-to-Market

SolidWorks provides an award-winning product design solution with 3D CAD, and mechanical design and verification tools. In addition, SolidWorks integrates analysis and simulation modules along with a comprehensive PDM solution to enable version control, archive and vaulting, and collaborative capabilities for enterprise deployments. The solution helps employees design collaboratively in real-time to increase productivity and improve overall management of the product development lifecycle.

Design data often consists of files that are tens to hundreds of megabytes in size resulting in slower performance over a WAN during basic data check-in, check-out and editing operations. While PDMWorks Enterprise enables and offers data distribution over WANs with high performance, Riverbed Steelheads can further increase application performance over the WAN. Riverbed augments SolidWorks PDMWorks Enterprise deployments by accelerating the transfer of data and design documents across the WAN, reducing bandwidth usage while still ensuring data coherency. This allows organizations to improve performance and productivity across a full range of applications and reduce overall bandwidth utilization.

With Riverbed's Steelhead® Mobile, enterprises can even further extend collaboration capabilities to remote workers at customer sites or telecommuting. Together, SolidWorks and Riverbed can cut down the time-to-market for product development and release saving organizations money and improving working productivity and satisfaction.

## PDMWorks Enterprise Performance Improvement with Riverbed:

Riverbed Steelheads were shown in controlled lab testing to potentially improve performance of getting a SolidWorks assembly through on-demand replication of PDMWorks Enterprise. Testing was performed on a range of assembly "Get" operations over a T-1 with 100ms of roundtrip latency and is detailed below. Assemblies ranged in size from approximately 4.8 MB to 25 MB in vaults with 96 to 500 files. Data reduction from Steelhead appliances ranged from 61 to 82 percent of non-cached data during testing. The benefits from deploying Riverbed in a SolidWorks environment are not limited to these selected operations, but



# SOLUTION BRIEF: SolidWorks PDMWorks Enterprise 2008 SP1 + Riverbed

## About Riverbed

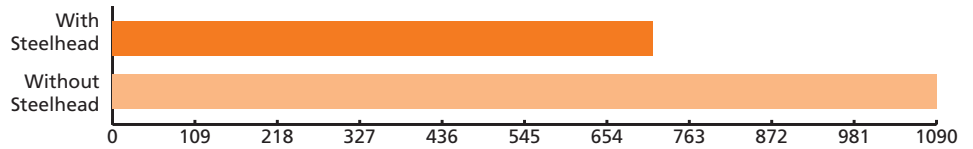
Riverbed Technology is the performance leader in wide-area data services (WDS) solutions for companies worldwide. By enabling application performance over the wide area network (WAN) that is orders of magnitude faster than what users experience today, Riverbed is changing the way people work, and enabling a distributed workforce that can collaborate as if they were local. Additional information about Riverbed (Nasdaq: RVBD) is available at [www.riverbed.com](http://www.riverbed.com).

## About SolidWorks

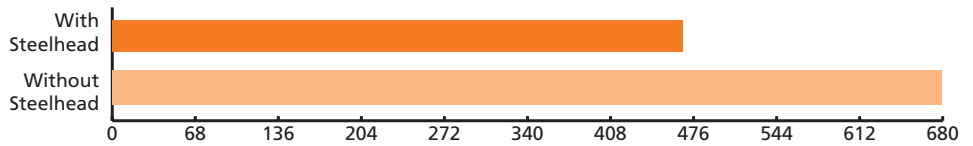
SolidWorks is the leader in 3D CAD technology, empowering product design teams with intuitive, high performance software that is easy to use, and provides the freedom to design products that set firms apart. SolidWorks serves customers in industrial, medical, scientific, consumer, educational, technology, and transportation markets and is used by over 1/2 million product designers and engineers worldwide to design better products. Information about SolidWorks solutions and services can be found at [www.solidworks.com](http://www.solidworks.com).

additional testing should be conducted by customers looking to accelerate a distributed PDMWorks Enterprise solution.

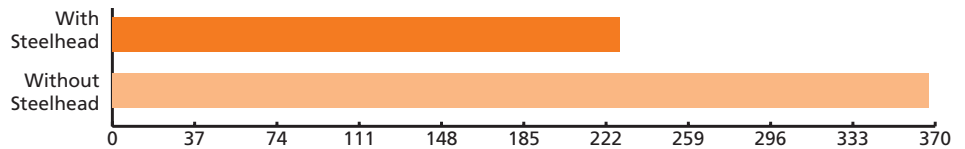
Get ZR Assembly (25 MB, 96 MB file vault with 211 files) – Time to Complete (in seconds)



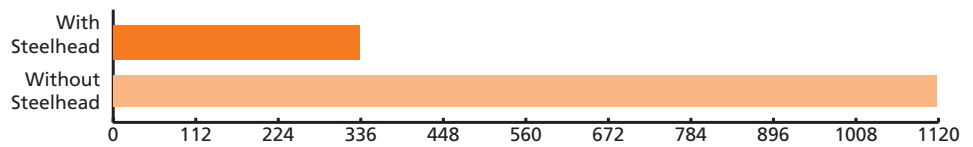
Get Suspension Assembly (6 MB, 131 MB file vault with 500 files) – Time to Complete (in seconds)



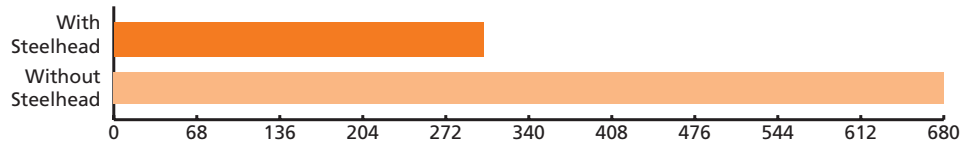
Get Motor Assembly (4.8 MB, 25 MB file vault with 96 files) – Time to Complete (in seconds)



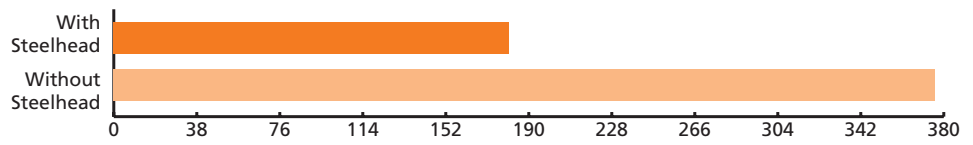
Get after Modify ZR Assembly (25 MB, 96 MB file vault with 211 files) – Time to Complete (in seconds)



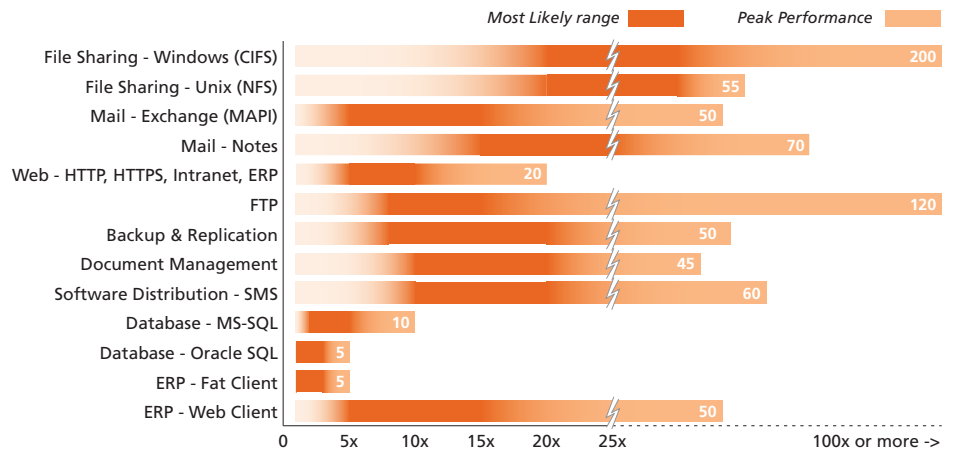
Get after Modify Suspension Assembly (6 MB, 131 MB file vault with 500 files) – Time to Complete (in seconds)



Get after Modify Motor Assembly (4.8 MB, 25 MB file vault with 96 files) – Time to Complete (in seconds)



## Steelhead Products Accelerate a Broad Range of Applications



**Riverbed Technology, Inc.**  
 199 Fremont Street  
 San Francisco, CA 94105  
 Tel: +1 415 247 8800  
 Fax: +1 415 247 8801  
[www.riverbed.com](http://www.riverbed.com)

**Riverbed Technology Ltd.**  
 1, The Courtyard, Eastern Road  
 Bracknell  
 Berkshire RG12 2XB  
 United Kingdom  
 Tel: +44 1344 354 910

**Riverbed Technology Pte. Ltd.**  
 350 Orchard Road #21-01/03  
 Shaw House  
 Singapore 238868  
 Tel: +65 68328082

**Riverbed Technology K.K.**  
 Shiba-Koen Plaza Building 9F  
 3-6-9, Shiba, Minato-ku  
 Tokyo, Japan 105-0014  
 Tel: +81 3 5419 1990