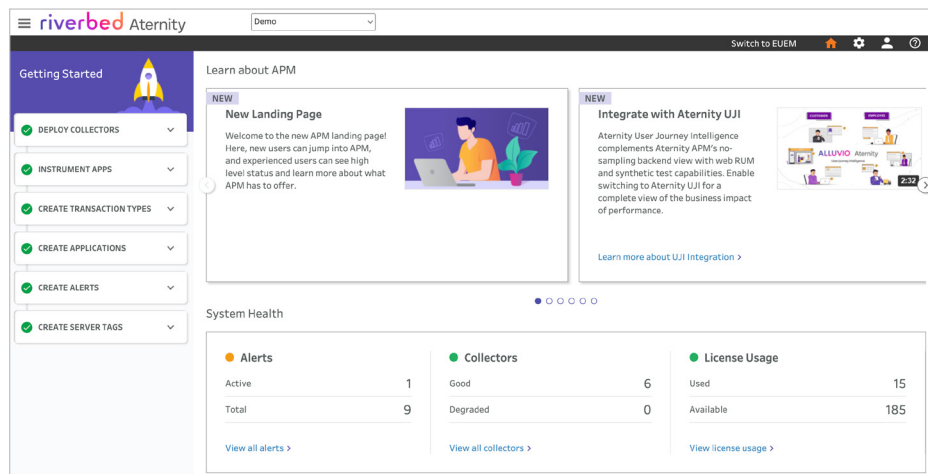


# Aternity Application Performance Monitoring (APM)

Simplified high-definition APM visibility leveraging Real User Monitoring, Synthetic Monitoring, and OpenTelemetry, that is scalable, easy to use and deploy, and unifies insights across end users, applications, networks, and the cloud-native ecosystem

Customers and employees alike expect smooth and meaningful digital experiences to get things done. Businesses rely on IT to build and deliver apps and infrastructure to meet these expectations. To keep pace, IT is in the process of adopting technologies,

cloud, mobile, and analytics-to deliver innovative apps and support digital business. With Riverbed® Aternity's **big data technology** you get complete insight into the modern application technology stack, with full diagnostic detail for every transaction, at any scale.



# One solution for all your monitoring needs, on and off the cloud

**Application performance insights:** Trace every transaction from user to back-end. Understand app dependencies or expose and fix even the most hard-to-detect code, SQL, web services, or resource utilization problems quickly.

**User experience and business insights:**

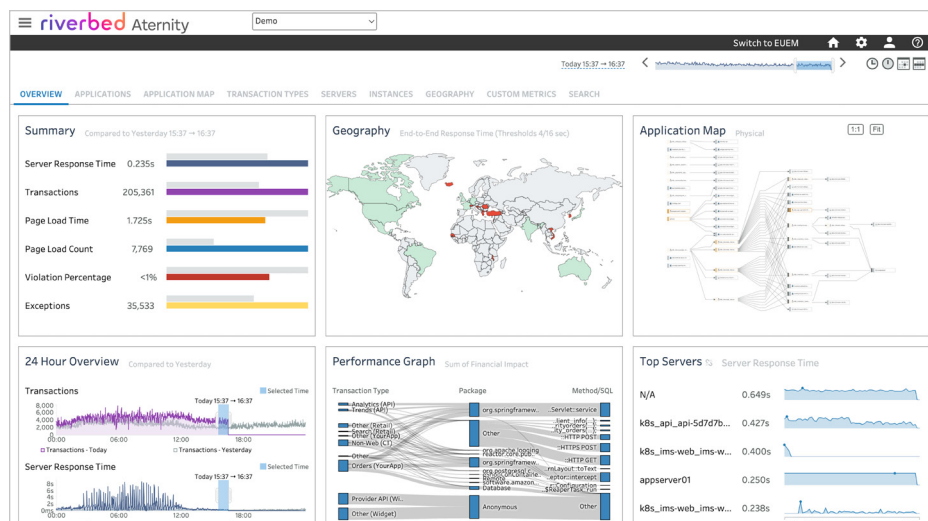
Understand your users' satisfaction and trends in real time. Identify your application's best and least used features and quantify financial impact on business results.

**Cloud-native ecosystem visibility:** Get full

operational visibility into transactions, containers, and microservices running on modern cloud-based application infrastructure, including Docker, Kubernetes, Pivotal Platform, Red Hat OpenShift, AWS, Azure, and Google Cloud.

**Early warning alerting on unfolding application**

**degradations:** Riverbed Aternity APM features an alert system that simplifies and expands alert setup. It empowers easy organization of both dynamic and threshold alerts or a combination of the two across all APM metrics and it overhauls the alert history, adding details about alert time, duration, status, spark lines, related alerts, and web hooks for easy integration with other solutions.



## Never miss a performance problem

Armed with the most complete native instrumentation and OpenTelemetry collection solution in the industry, you're never more than two clicks away from an answer when alerted of a problem.

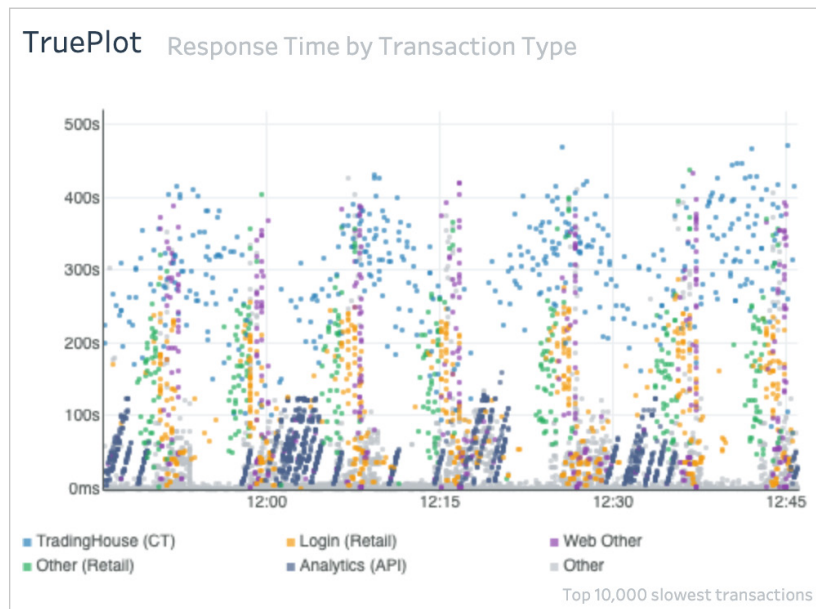
Aternity APM traces every transaction across every tier, while capturing systems metrics every second even in high-throughput production environments. This gives you complete and granular visibility for root cause analysis and problem discovery.

Unlike other solutions that often sample transactions and roll-up metrics into intervals of 1-minute or more, Aternity APM's detailed reporting exposes and diagnoses even sporadic and intermittent problems.

## Reconstruct & diagnose past incidents

Aternity APM stores a record of every transaction along with its associated system metrics, call trees including parameters, URLs, log messages, user information, network conversations and web service calls. As a result, users can reconstruct past incidents in great detail, measure impact, and act decisively to fix issues.

Other solutions only partially store data associated with past transactions. This leads to missing evidence, creates blind spots, and fails to find root cause.



## Manage distributed environments

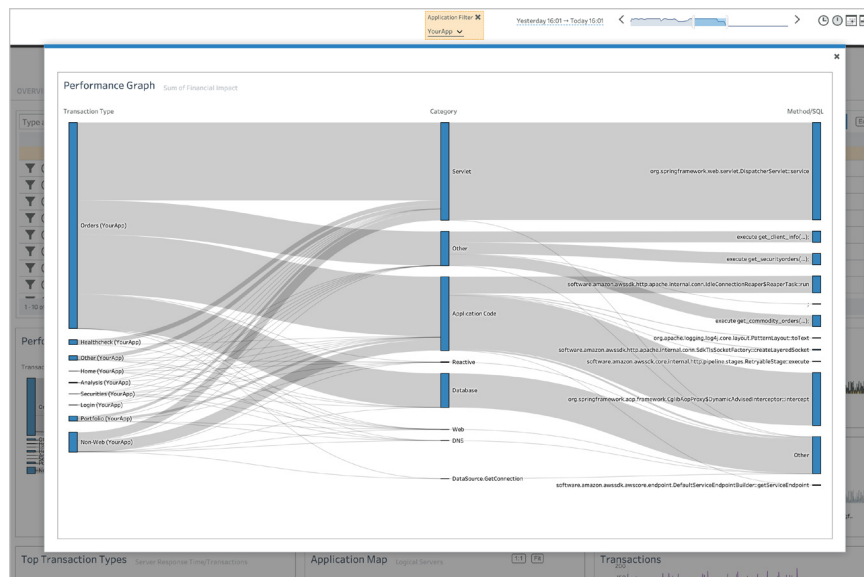
Seamlessly monitor and manage your dynamic infrastructure, including data centers, IaaS, PaaS, and containerized environments.

Riverbed Aternity APM accurately correlates and stitches the end-to-end path for **every single user transaction** unlike other solutions that only produce an aggregated map based on patchy data.

## Derive business and application intelligence

Query across billions of transactions and use AI and business-relevant analytics to discover anomalies, draw application insights, and tie issues to business metrics.

Perform free form analysis to filter down by transaction type, user, server, method parameter, etc. Discover and optimize key business transactions and prioritize development efforts based on the financial impact on the business.



# OpenTelemetry

With Aternity's built-in support for OpenTelemetry, your DevOps teams have complete flexibility to embed observability with Jaeger, Zipkin, or any other standards-based approach, for precise contextual alerts and advanced AI-powered root cause analysis, to dramatically reduce incident resolution times across any hybrid cloud or SaaS environment.



## Riverbed – Empower the Experience

Riverbed is the only company with the collective richness of telemetry from network to app to end user that illuminates and then accelerates every interaction so that users get the flawless digital experience they expect across the entire digital ecosystem. Riverbed provides two industry-leading solutions: the Riverbed Unified Observability portfolio, which integrates data, insights, and actions across IT to enable customers to deliver seamless digital experiences; and Riverbed Acceleration, which offers fast, agile, and secure acceleration of any application over any network to users, whether they are mobile, remote, or on-premises. Together with our thousands of partners, and market-leading customers across the world, we empower every click, every digital experience. Learn more at [riverbed.com](https://riverbed.com).