

Network Performance + Infrastructure Management

Integrating SNMP, configuration and flow/packet information

Integrate your infrastructure monitoring and network performance management tools to collaborate better between teams. Solve problems faster and gain a complete picture of network performance.

When asked about the cause(s) of their last difficult performance issue, 38% of enterprises cited configuration problems as the primary cause; an equal number cited network performance / congestion problems (EMA Network Megatrends, 2016). Together the network and network infrastructure make up more than three-fourth of all performance issues. As a result, the typical network team spends 70% of their time fixing problems. (Forrester Nextthink TAP, 2014.pdf)

To make matters worse, these teams often operate independently with little ability to correlate network issues with infrastructure problems. The time required to identify the root cause of performance problems is elongated and end-user satisfaction plummets.

SteelCentral Network and Infrastructure Monitoring

Within the SteelCentral portfolio, the Network and Infrastructure Management solution ensures the

reliability of the networks and infrastructure that underpin your business--critical enterprise apps.

The SteelCentral Network Performance and Infrastructure Management solution offers broad monitoring and analytics for network traffic and infrastructure elements...all in the context of the end-user application experience. Only SteelCentral monitors and provides insights into network performance, congestion, configuration, and device health.

SteelCentral Network and Infrastructure Management combines the network performance visibility you get with SteelCentral NetProfiler, with visibility into the status and health of network infrastructure devices from SteelCentral NetIM, so that you can troubleshoot all network-based problems quickly and reduce the time you spend on troubleshooting network issues.

With SteelCentral NetIM infrastructure monitoring, network architects get complete visibility into the network infrastructure – the health of the routers, switches, etc. They can monitor the performance of the devices, visualize topologies and track configuration changes. Armed with these capabilities and the one-click integration with SteelCentral NetProfiler network performance management, Network Operations teams can directly expose, triage, and troubleshoot network infrastructure issues when the need arises.

The integration provides several simple troubleshooting workflows for the NetOps and Network Architects teams:

1. Visibility into the network device health. NetIM monitors key network device performance and health metrics, such as CPU and interface utilization, memory, etc. In order to troubleshoot infrastructure problems, NetOps teams need visibility into the impact of these metrics on network performance.
2. Visibility into network configurations. NetIM enables companies to visualize and triage configuration issues. This visibility enables NetOps teams to identify and roll back or fix

recently changed devices that might be affecting performance.

3. Visibility into who is affected by an infrastructure issue. When a router or switch is oversubscribed, launch SteelCentral NetProfiler to understand who is affected by this incident. See metrics such as Top Talkers, Apps and Hosts.
4. Visibility into Quality of Service. NetProfiler can track if applications are tagged with correct DSCP markings over a specific network interface within your infrastructure.

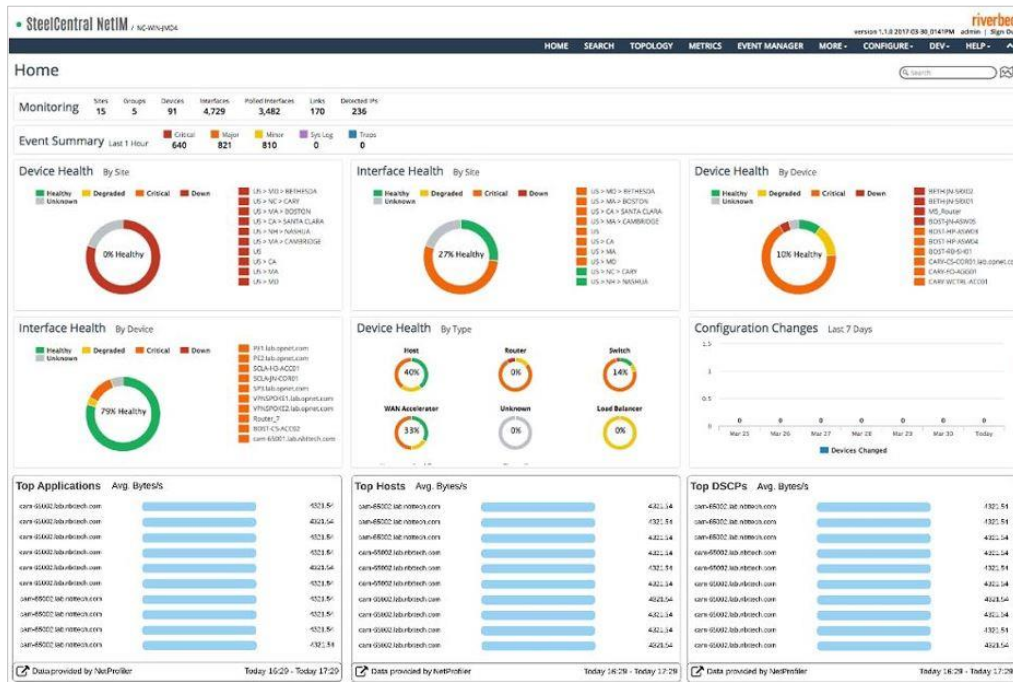


Figure 1
From any SteelCentral NetProfiler Host or Interface, you can right-click to “Search in NetIM.” From there you can access any device or configuration information to streamline your network triage efforts. The integration works in the reverse, too, from NetIM to NetProfiler.

About Riverbed

Riverbed enables organizations to modernize their networks and applications with industry-leading SD-WAN, application acceleration, and visibility solutions. Riverbed’s platform allows enterprises to transform application and cloud performance into a competitive advantage by maximizing employee productivity and leveraging IT to create new forms of operational agility. At more than \$1 billion in annual revenue, Riverbed’s 28,000+ customers include 97% of the *Fortune* 100 and 98% of the *Forbes* Global 100. Learn more at riverbed.com.



© 2017 Riverbed Technology. All rights reserved. Riverbed and any Riverbed product or service name or logo used herein are trademarks of Riverbed Technology. All other trademarks used herein belong to their respective owners. The trademarks and logos displayed herein may not be used without the prior written consent of Riverbed Technology or their respective owners.