

The leader in AIOps for observability

Smarter Networks Start Here:

Intelligent Observability for the AI Era

riverbed[®]

The Network is Mission Critical – and Under Pressure

The modern enterprise runs on the network. It delivers every app, every experience, every outcome. But as digital transformation accelerates, the network is being pushed to its limits by exploding data volumes, sprawling cloud and edge environments, and rising expectations for flawless performance and security.

Yet, the tools many teams rely on haven't kept up. Traditional monitoring is reactive, siloed, and manual, leaving IT teams buried in alerts but starved for insight.



Only 42% of network teams consider themselves successful at meeting today's operational demands.



Why Legacy Monitoring No Longer Measures Up

As networks become more dynamic, distributed, and user-centric, traditional tools are increasingly showing their limitations. IT teams face several escalating challenges:

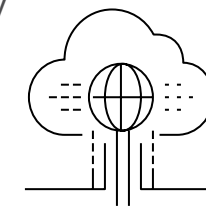
Data Overload, Limited Insight

Enterprise networks now generate 10× more telemetry than five years ago (Riverbed research), with global traffic growing around 25% annually (Nokia). Legacy systems can't keep pace. Organizations need automated analysis powered by AI to extract timely, actionable insight from this wave of raw data.



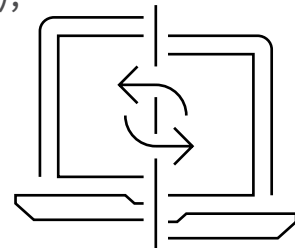
Hybrid and Edge Fragmentation

With 91% of enterprises operating in hybrid or multi-cloud environments and over 75% of enterprise data created or processed at the edge (Gartner), observability must follow workloads – from cloud-native apps to remote users. Systems designed for centralized data centers can't scale to this level of dispersion..



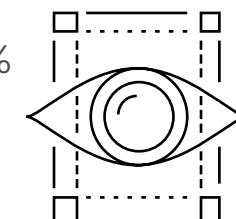
AI Isn't Optional Anymore

Research shows 64% of IT leaders say they can't meet SLAs without intelligent assistance (EMA), while 60–80% of network alerts today offer no value (EMA). That gap underscores the need for AI-integrated network observability, not just more dashboards.



Too Many Tools, Too Little Context

When networking, infrastructure, application, and service teams use disparate tools, visibility fractures. Work is duplicated, data doesn't converge, and incident response slows. That's why 96% of enterprises are consolidating the number of tools and vendors they use according to the 2025 Riverbed State of AIOps Survey.



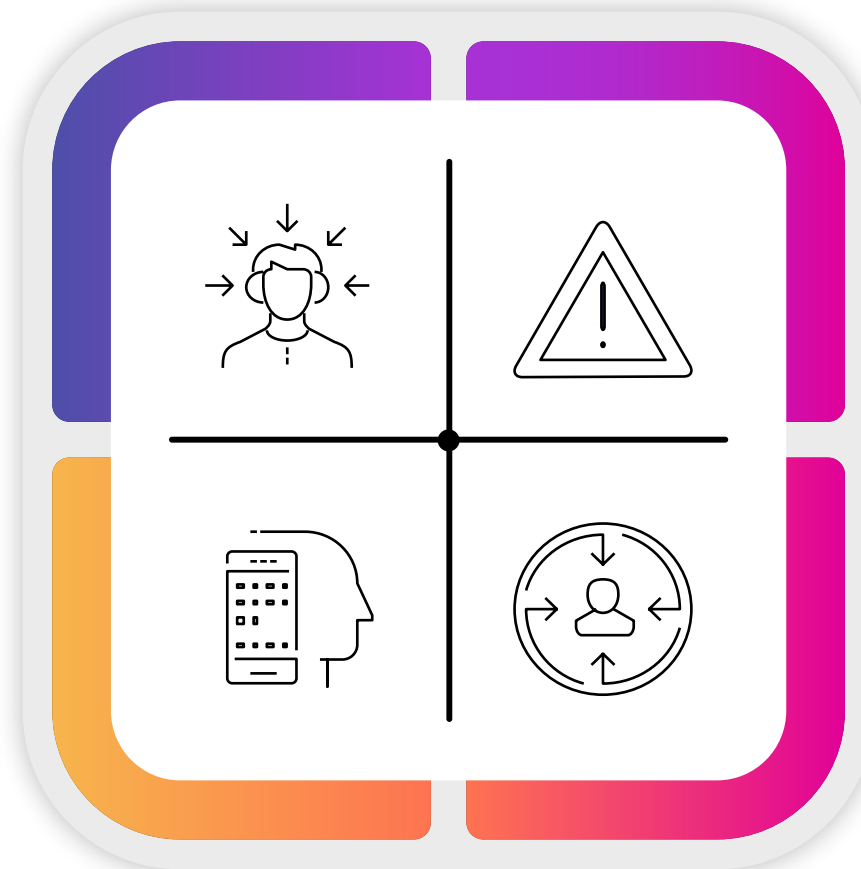
These challenges aren't hypothetical – they're daily operational headaches. Fragmented, manual, reactive monitoring falls short in today's environment.

Legacy Tools Aren't Built for Today's Networks

NetOps and SecOps teams are drowning in complexity: siloed tools, fragmented metrics, reactive alerts, and a growing avalanche of data without meaningful insight. Traditional monitoring tools:

Flag issues only
after users are
impacted

Offer opaque AI, if
any at all, stuck in
point tools



Rely on manual root
cause analysis by
experts

Operate on isolated silos
with no cross-domain
correlation

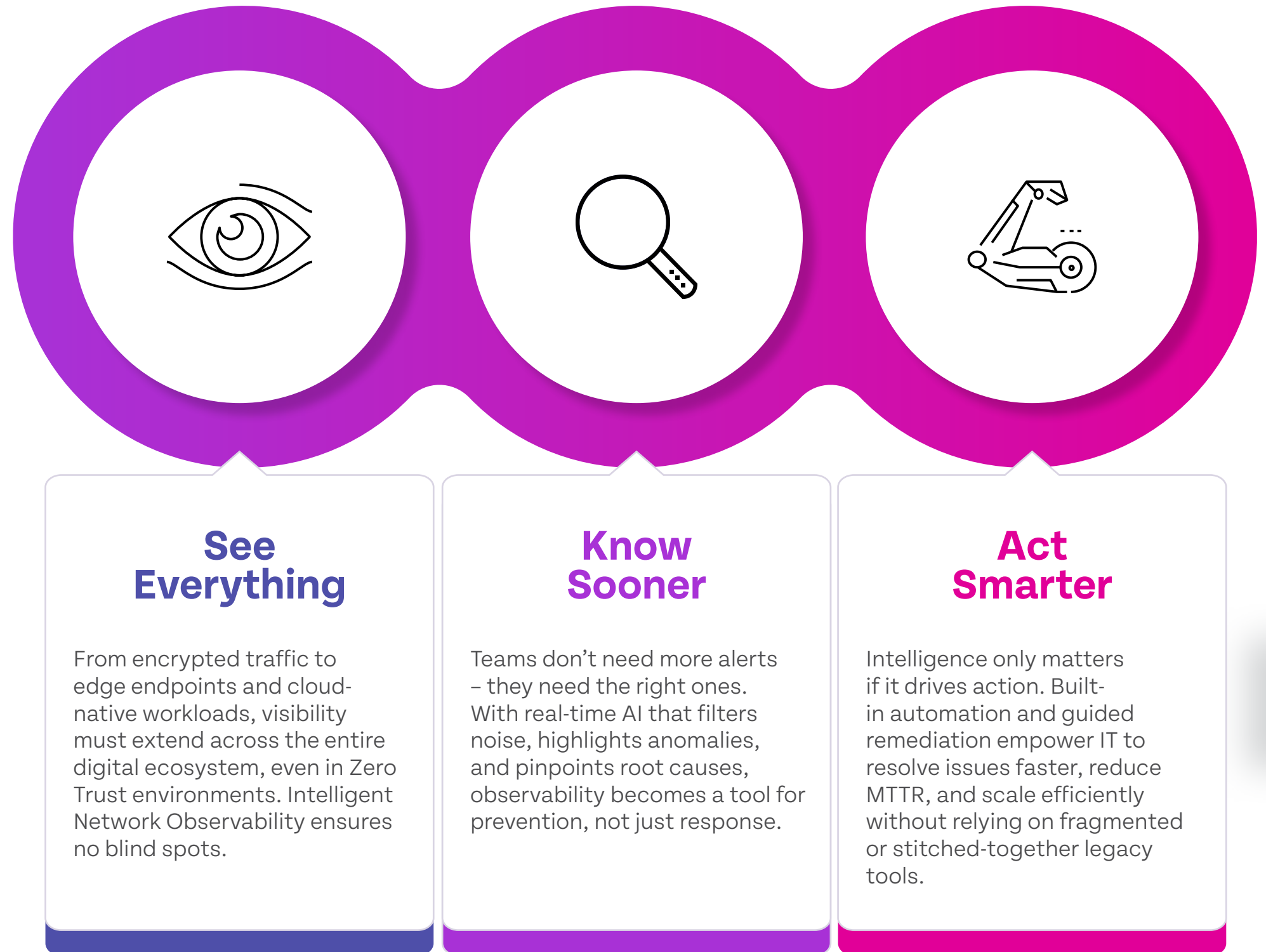
Legacy solutions weren't built for scale or speed. As complexity intensifies, organizations need a smarter, unified approach: one that accelerates resolution, sharpens visibility, and anticipates problems before they disrupt the business.

A New Mandate for Network Observability: Built for Intelligence

What's needed is a fundamentally different approach. **Intelligent Network Observability** moves beyond data collection to deliver insights, speed, and proactive control. By unifying full-fidelity telemetry with centralized context, explainable AI, and automation, Riverbed enables IT teams to detect, diagnose, and resolve issues before they impact users.

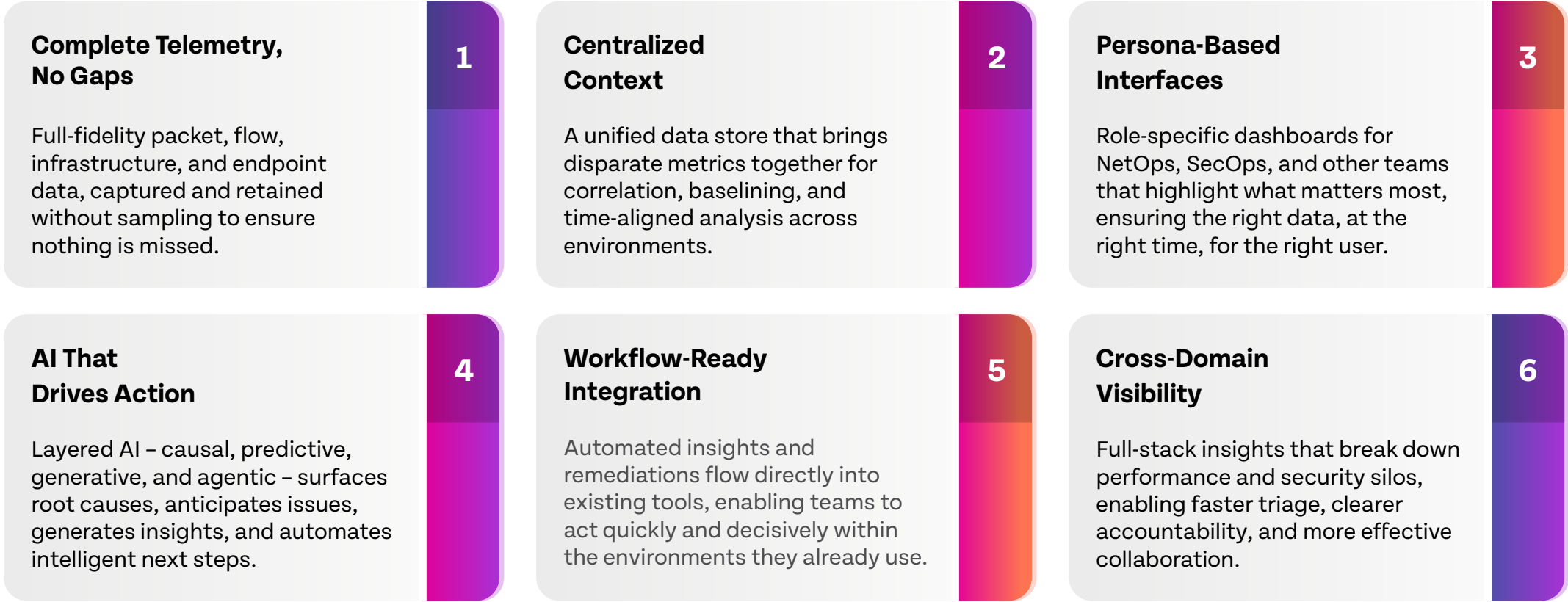
These capabilities are no longer aspirational – they're foundational. Intelligent Network Observability is now the standard for operating resilient, high-performing digital environments.

With Riverbed, Intelligent Network Observability isn't just a concept. It's a practical, proven strategy – built for speed, built for scale, and built for modern enterprise networks.



The Framework for Modern IT

Intelligent Network Observability redefines the model for how enterprises monitor and manage their networks – collecting the right data, in the right context, with the intelligence to drive action.



This is what Intelligent Network Observability looks like.
And this is exactly the approach Riverbed has engineered from the ground up.

Bringing Intelligent Network Observability to Life

Riverbed’s approach to Intelligent Network Observability is grounded in a practical, outcome-driven model: full-fidelity telemetry, centralized context, cross-domain correlation, and adaptable AI that explains, guides, and automates.

While many vendors promise AIOps, Riverbed delivers actionable intelligence with built-in automations that streamline resolution and improve performance at scale. This isn’t aspirational – it’s what Riverbed enables today through an integrated observability platform.

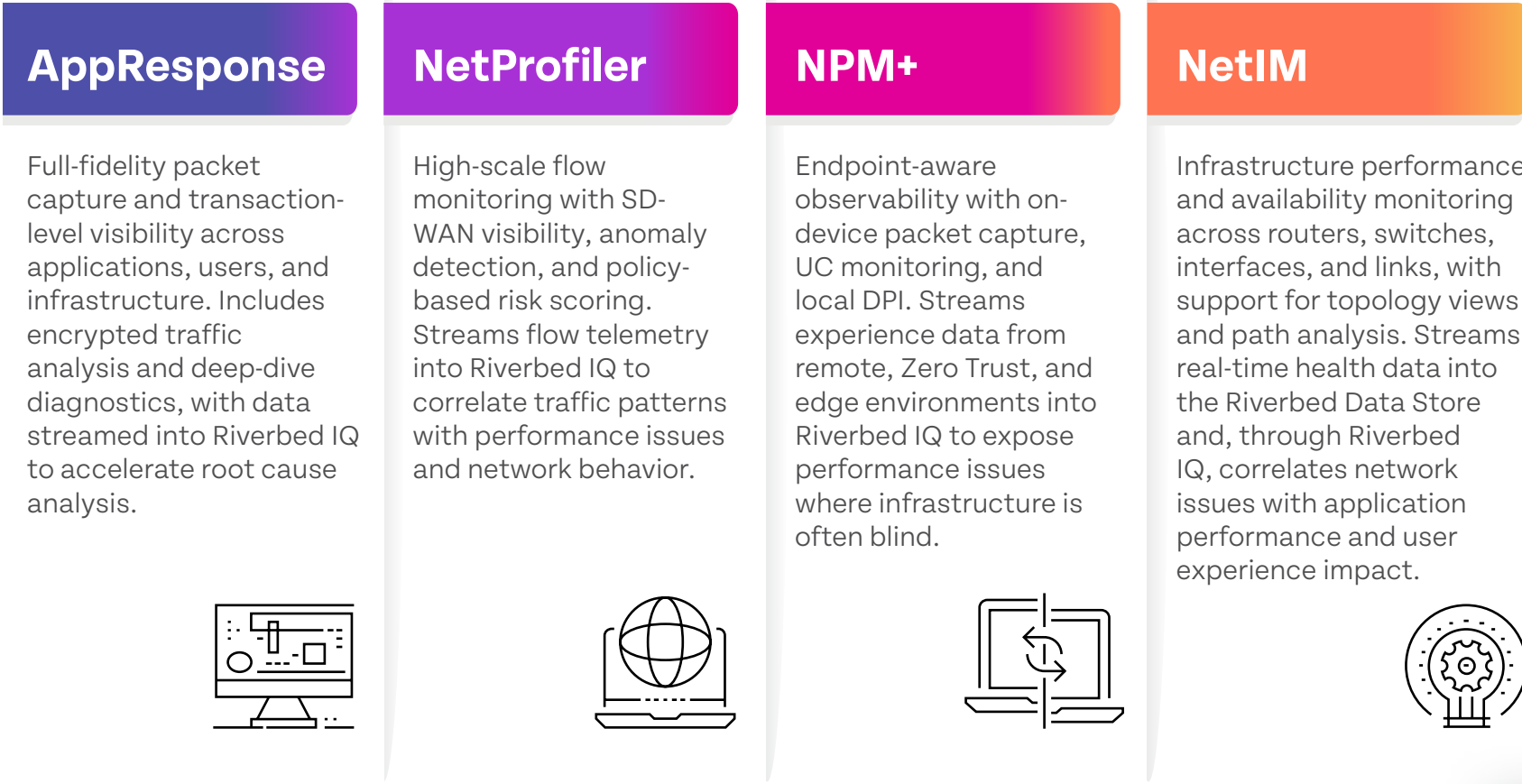
At the foundation of this model is the Riverbed Data Store, a high-performance telemetry layer purpose-built to house and correlate application, network, infrastructure, user experience, and even third-party data – all without sampling. This shared context enables true visibility across environments, timelines, and domains.

Sitting above the Riverbed Data Store is Riverbed IQ, the AI-driven insight and automation layer that turns data into decisions. IQ isn’t a bolt-on tool – it’s embedded across the Riverbed ecosystem, delivering real-time, human-readable insights that explain root causes, detect anomalies, and guide resolution. It learns what’s normal, flags what’s not, and acts on what matters, supporting IT teams with automation that accelerates workflows and streamlines response, all while keeping human oversight firmly in control.

Full-Fidelity Telemetry



Riverbed Intelligent Network Observability is powered by a suite of seamlessly integrated tools, each purpose-built for a specific layer of visibility. Whether your priority is packet capture, flow analysis, infrastructure monitoring, or endpoint insight, you can start where it matters most and expand over time to meet your organization’s evolving needs.



Each solution adds a vital layer of visibility, feeding into the centralized Riverbed Data Store to create a unified, full-fidelity telemetry foundation. Layered on top, Riverbed IQ continuously analyzes this data across domains, delivering explainable insights and orchestrated automations that integrate directly into existing workflows.

This is network observability reimaged: not just more data, but smarter decisions at every layer.



The Path Forward: Intelligent Network Observability Starts Here

The network has never been more critical – or more complex. As organizations embrace cloud, hybrid work, and distributed edge architectures, IT teams must ensure security, performance, and user experience across environments they don’t fully control. Traditional monitoring tools weren’t built for this. Riverbed is.

Riverbed Intelligent Network Observability is purpose-built for today’s dynamic networks. It unifies full-fidelity telemetry across packet, flow, endpoint, and infrastructure domains through the Riverbed Data Store, and applies explainable, real-time intelligence with Riverbed IQ – our SaaS-delivered AI and automation layer.

Legacy tools fragment visibility, generate noisy alerts, and require manual correlation. Riverbed changes that. By delivering centralized telemetry and adaptive intelligence through an integrated platform, we help teams cut through the noise, focus on what matters, and act faster with confidence.

For IT leaders ready to reduce complexity, improve resiliency, and scale digital experience, Riverbed provides the data foundation, AI-powered insight, and operational flexibility to make it happen.

Experience the Difference. Schedule a demo or talk to your Riverbed representative to see how Intelligent Network Observability can work for you.

[LEARN MORE AT RIVERBED.COM >](#)

[REQUEST A RIVERBED PLATFORM DEMO >](#)

[CONTACT RIVERBED EXPERTS FOR SOLUTIONS & SERVICES >](#)

riverbed

Riverbed – Empower the Experience

Riverbed is the only company with the collective richness of telemetry from network to app to end user that illuminates and then accelerates every interaction so that users get the flawless digital experience they expect across the entire digital ecosystem. Riverbed provides two industry-leading solutions: the Riverbed Unified Observability portfolio, which integrates data, insights, and actions across IT to enable customers to deliver seamless digital experiences; and Riverbed Acceleration, which offers fast, agile, and secure acceleration of any application over any network to users, whether they are mobile, remote, or on-premises. Together with our thousands of partners, and market-leading customers across the world, we empower every click, every digital experience. Learn more at [riverbed.com](#).

© 2025 Riverbed Technology LLC. All rights reserved. Riverbed and any Riverbed product or service name or logo used herein are trademarks of Riverbed Technology. All other trademarks used herein belong to their respective owners. The trademarks and logos displayed herein may not be used without the prior written consent of Riverbed Technology or their respective owners. MSKD-2967_Overcoming barriers to actionable insights-eBook_020325