

---

# Riverbed NetAuditor

---

## Network configuration management and troubleshooting business challenge

### The Business Challenge

As much as 42% of all network problems can be traced to problems in network configurations ("Managing Networks in the Age of Cloud, SDN, and Big Data: Network Management Megatrends 2014," Enterprise Management Associates); however, most enterprises today track network configurations manually, using labor-intensive mapping tools and spreadsheets to diagram network maps and track network configurations across their organization. Despite significant efforts to set up these diagrams, enterprise networks are mutable: they change frequently based on new company needs and dynamics.

Rarely do these manual mapping approaches keep up. They are manual, labor-intensive, and error-prone, making it very difficult to keep configuration information up to date and accurate in constantly changing environments. Something as innocuous as adding a new server can impact application performance if network configurations are not updated and maintained. The unintended behavior that these errors cause can result in costly performance lapses and outages. To make matters worse, these manual approaches actually hide potential issues, making both recent changes and configuration problems difficult to identify and, consequently, remedy.

In addition, because the diagrams themselves are frequently outdated, the company opens itself to risks associated with design reviews, security audits, regulatory compliance (e.g., SOX, HIPAA, GLB).

### The Riverbed Solution

Riverbed® NetAuditor is a comprehensive solution that helps companies diagram, troubleshoot and report enterprise configuration. The solution automatically maps network elements using a high-definition model created with configuration data, show commands, and Simple Network Management Protocol (SNMP), and highlights new and modified devices, as well as devices with configuration errors.

#### Riverbed NetAuditor:

- Creates on-demand maps and diagrams, including application network paths using a web interface to troubleshoot networking problems
- Performs in-depth analysis of network elements including routers, switches, load balancers, firewalls and WAN Optimizers including Riverbed® SteelHead™
- Creates automated network diagrams using configuration and operational data including physical, logical and virtual components
- Offers over 1,500 out-of-the-box rules based on industry best practices, security standards as well as customized rules and templates for organizational standards and requirements

NetAuditor dramatically reduces the workload associated with maintaining up-to-date and accurate network configuration and documentation. In addition, it maximizes network availability by improving troubleshooting with accurate and complete network auditing and diagramming.

## Key Benefits

### Resolve network configuration issues with actionable intelligence

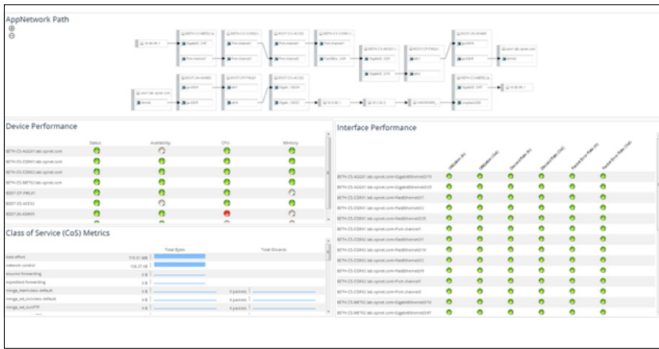
- Drill-down from high-level blended performance views to application specific topology maps
- Leverage search-based troubleshooting to rapidly identify problem area
- Quickly identify configuration differences and potential violations
- Share results and collaborate with colleagues

### Significantly reduce time for network topology diagramming

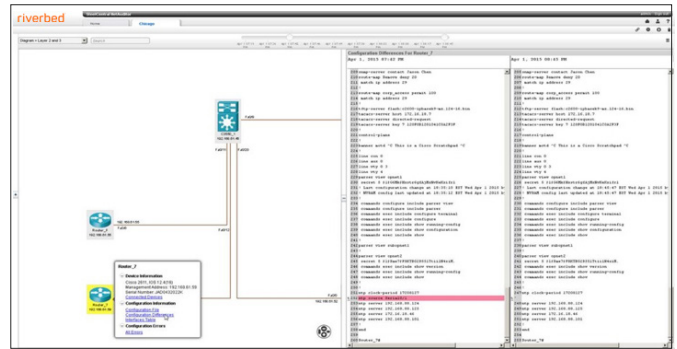
- Accelerates reporting with a dynamic, application infrastructure service map that includes all related components
- Gain detailed insight into physical, logical and virtual components
- Maintain historical information and track changes

### Ensure compliance with regulatory, organizational, and security policies

- Automate generation of audit-quality diagrams
- Out-of-the box templates for regulatory and industry standards
- Validate against a "golden" configuration
- Automatic and periodic security advisory updates



**Figure 1**  
Riverbed NetAuditor's AppNetwork path enables companies to track the precise network path that an application transverse throughout the network.



**Figure 2**  
Riverbed NetAuditor improves performance troubleshooting by highlighting configuration differences and errors.

---

## Key Features In-depth

### Troubleshooting

- AppNetwork path shows how application transverses the network making troubleshooting performance issues easier
- On-demand, context-specific maps and diagrams can be easily shared or downloaded
- Time-based snapshots highlight configuration differences and potential violations

### Automated diagramming

- Automatically generate highdefinition network diagrams using configuration and operational data
- Provide detailed insight into physical, logical and virtual components
- Generate professional quality HTML or Visio diagrams
- Interactive multi-layer navigation
- Customizable diagram layout and annotations
- Archive diagrams to maintain historical information and track changes

### Policy compliance and reporting

- Rules-based analysis for over 1,500 rules
  - Regulatory compliance: FISMA, SOX, HIPAA
  - Security standards and guidelines: NIST 800-53, SAFE, PCI, DISA STIG
  - Best practice guidelines by Cisco, NSA, and others
  - Organizational policies: Configuration correctness
  - Fully-customizable rules suite
- Perform security checks by analyzing ACLs, firewall policies, and other security controls
- Trend audit results over time
- Generate detailed inventory reports
- Track network changes using network difference reports

---

## Related Products

### Riverbed® NetIM

Infrastructure management solution that captures device metrics, helps detect performance issues, maps application network paths, diagrams your network, and helps troubleshoot infrastructure problems.

### Riverbed® NetPlanner

Automates analysis and planning of multi-technology, multi-vendor networks. It performs "what if" analyses to manage risk and cost associated with network growth and change—accelerating application deployments and migration to new technologies, such as VoIP, VPNs, IPv6, and more. Riverbed NetPlanner's predictive design environment trends traffic growth for capacity planning, optimizes network designs to reduce the risk of downtime, and proposes QoS configurations to achieve desired network and application performance.

---

## Learn More

For IT, application performance is the most visible indicator of job performance, and that's why organizations around the world rely on the Riverbed® unified network performance management family of products for the insight they need to deliver a consistently top-notch user experience. With Riverbed's performance management solutions, you can monitor every critical part of your application delivery chain and troubleshoot any issues that arise—before they become problems. Whether you are rolling out new applications, consolidating or virtualizing data centers, migrating to the cloud, or simply in need of a troubleshooting and visibility solution, Riverbed® NPM products provide you with a holistic view of your environment.

To learn more about Riverbed NPM solutions, please visit: [riverbed.com/npm](https://riverbed.com/npm).

---

### About Riverbed

Riverbed enables organizations to maximize performance and visibility for networks and applications, so they can overcome complexity and fully capitalize on their digital and cloud investments. The Riverbed Network and Application Performance Platform enables organizations to visualize, optimize, remediate and accelerate the performance of any network for any application. The platform addresses performance and visibility holistically with best-in-class WAN optimization, network performance management (NPM), application acceleration (including Office 365, SaaS, client and cloud acceleration), and enterprise-grade SD-WAN. Riverbed's 30,000+ customers include 99% of the *Fortune* 100. Learn more at [riverbed.com](https://riverbed.com).

The Riverbed logo consists of the word "riverbed" in a lowercase, sans-serif font. The letters are a vibrant orange color. A small registered trademark symbol (®) is located at the top right of the letter "d".