

---

# SteelConnect Analytics

---

Riverbed® SteelConnect™ Analytics provides a scalable solution to analyze and visualize the behavior of your SteelConnect EX SD-WAN deployment, giving you powerful and actionable insights to maximize agility, reliability and security.

## Product Description

Networking is strategic to business. As applications are delivered from the cloud, SaaS infrastructure and on-premises, the attack surface and security risks are increased many-fold. Therefore, more important than ever, network visibility and control, predictability, adaptability and a feedback loop based on analytics is a necessity for a trouble free and secure network. A strong analytics solution increases both the degree of insights and the degree of timely action.

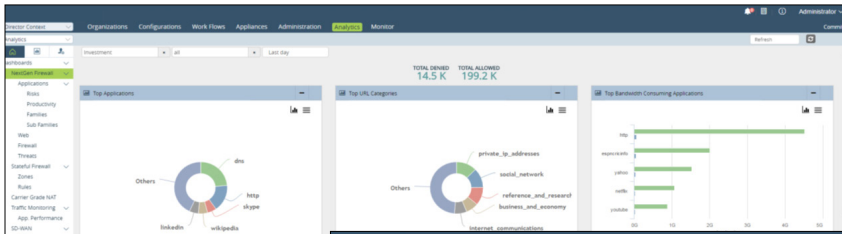
SteelConnect Analytics is purpose-built for SteelConnect EX platform covering routing, SD-WAN, SD-Security, and SD-Branch. It is a feature rich near real-time big data solution that provides visibility and control, baselining, correlation, prediction and feedback loop into SteelConnect EX software solutions. It provides real-time and historical search, reports on usage patterns, trends, security events, and alerts. SteelConnect Analytics analyzes large amounts of data sent from virtual network functions (VNFs) to present critical data points as actionable analytics and reports.

Tight native integration with SteelConnect EX platforms ensures optimized storage, search and performance.

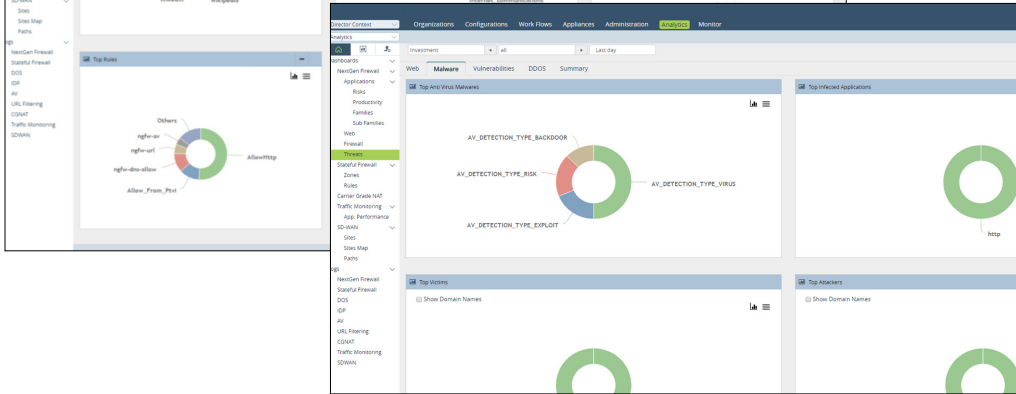
SteelConnect Analytics has built-in multi-tenancy that enables a single cluster to provide service for hundreds of sites, customers or organizations, enabling deployment flexibility and economy of scale. It tightly integrates with SteelConnect Director for complete role-based access control. It is operations-ready and supports standard protocols and log formats, such as Syslog and IPFIX, making it compatible with existing SIEM, monitoring, and reporting systems. SteelConnect Analytics is flexible and extensible via REST APIs.

The comprehensive native capabilities reduce costs and simplify deployments and data analysis by reducing the dependency on 3rd party data analytics platforms. For multi-vendor environments, SteelConnect Analytics interoperates with well-known performance management applications and 3rd party services.

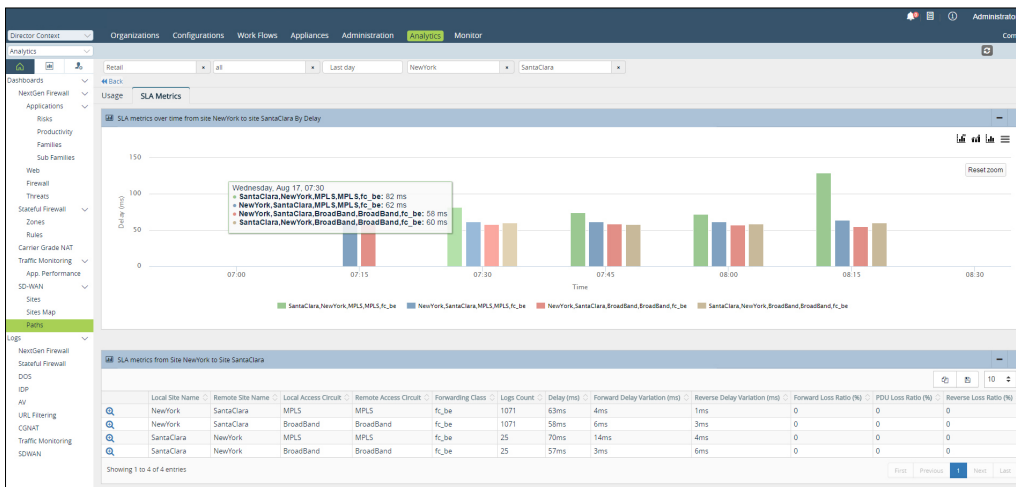
The result is a carrier-grade, multi-tenant big data analysis and visibility engine to realize the full value of SteelConnect EX deployments.



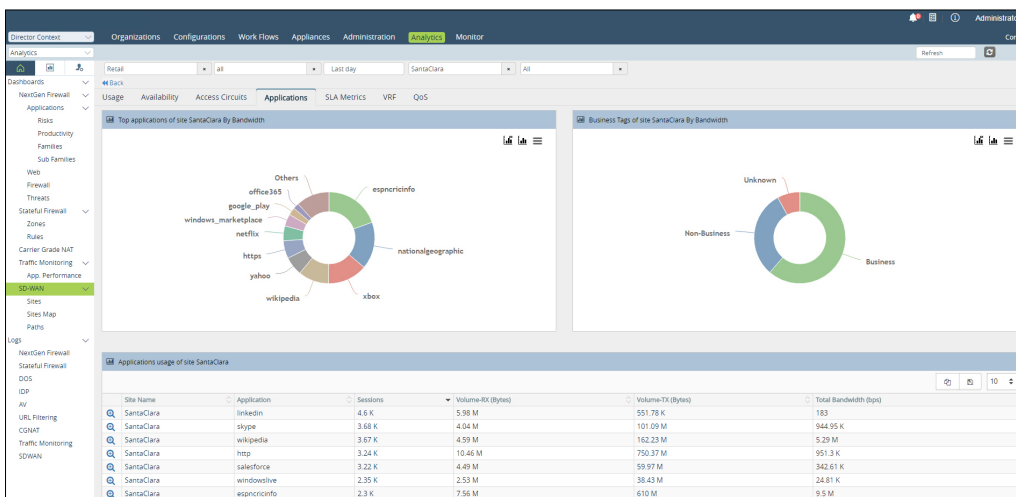
SteelConnect Analytics Dashboard



SteelConnect Analytics Threats Dashboard



SteelConnect Analytics SLA Metrics Dashboard



SteelConnect Analytics Top Applications Usage

## Deployment Flexibility

SteelConnect Analytics is available in virtual and physical appliance form factors enabling flexible and turn-key deployment of rich analytics for your SteelConnect EX SD-WAN.

## Product Features

<b>Data Logging Framework</b>	<b>Network Reports</b>	<b>Search</b>
Highly scalable, reliable, optimized, policy-driven data logging framework for all SteelConnect services Multiple transports	Traffic reports per site: availability, bandwidth usage per access circuit, bandwidth usage per application, latency/loss, QoS per access circuit	Multi-column search with drilldown Generic and custom queries Correlation searches
Multiple log formats – Netflow, IPFIX, syslog, PCAP support	Multi-site reports: connectivity, bandwidth usage and SLA metrics between sites	<b>Anomalies</b>
Streaming of logs to one or more 3rd party collectors	CGNAT reports: NAT events, pool utilization etc.	Support of anomaly detection in traffic pattern/usage Support for custom applications to detect anomalies and take actions (send traps, program policies, etc.)
<b>Reports and Analytics</b>	<b>Security Reports</b>	<b>GUI</b>
Real and historical time series log event reporting for various SteelConnect VNFs Traffic usage/protocol anomaly detection through trend lines and confidence band Dynamic WAN bandwidth measurements with historical analysis Prediction-based on extrapolation of trending data Application performance reports Ad-hoc and scheduled reports Predefined and custom report templates Report export formats: csv, pdf, xls, email notification	Firewall reports per tenant: top rules, zones, source, destination by IP/domain name/geo location, ports, protocols, session duration, QoS, DDoS and Flood detection Application reports: top L7 applications by risk, productivity, family and sub-families based on sessions, volume and throughput Web traffic reports: top web traffic by URL categories and reputation Threat profile reports: URL filtering and captive portal actions, IDS/IPS, anti-virus, SSL certificate anomalies, etc. Forensics: packet capture for known/unknown applications and detected vulnerabilities	Dashboard views for SD-WAN, security, vCPE functionality per tenant, per VNF Visualization using charts, real-time views, maps, grids Drilldown support to analyze data instantly for a given time range, detect trends and anomalies Automatic data enrichment Flexible reporting framework Google Maps support
		<b>Management</b>
		Role-based access control REST APIs for SteelConnect and 3rd party Apps Historical log archival and cleanup

## System Requirements

Number of Branches	Number of Tenants	Deployment Option	OS	Processor	Servers	Cores	Storage Capacity	Storage (HDD) Type	DRAM	Network Ports Per CPU
2,500	500	Application on Ubuntu (Ubuntu Package)	Ubuntu 14.04	Intel Xeon 64 bit	6x 1 socket server for database nodes	16 cores	2 TB	SSD preferred	128 GB per socket	2
1,000	200	Virtual machine			4x 1 socket servers for log collectors	4 cores	128 TB		8 GB per socket	
500	100				4 x 1 socket server for database nodes. log collectors integrated.	16 cores	2 TB		128 GB per socket	
							1 TB		64 GB per socket	

Resource requirements are for 1 search and 1 analytics node deployed in Non-HA. Riverbed recommends HA deployment for best performance and availability. Refer to technical documentation for headend design with SDEX-ANALYTICS physical appliance.

# Riverbed® SteelConnect™ Analytics Appliance Specification

## SteelConnect Analytics

### Product Specifications

Model	SD EX-ANALYTICS 80 series
Profile	Rack mount: 1U
Solid State Drives	1x 1.92 GB
Memory	128 GB (4 x 32)
CPU Cores	20
Interfaces	2x 10GbE RJ-45
Management Ports	2x 1 GbE 2x USB 3.0 Type A 1x DB9 console

## SteelConnect Analytics

### Power and Physical Specifications

Model	SD EX-ANALYTICS 80 series
Power Supply	2x 650 W
Power [Watts] (typical)	208 - 218 W
BTU (typical)	708 - 743 W
Operating Acoustic (typical)	56 dB
Temperature	10° to 35°C / 50° to 95°F (Operating) -40° to 70°C / -40° to 158° F (Storage)
Relative Humidity	90%, non-condensing at 35°C
System Dimensions (LxWxH)	25.4 x 17.2 x 1.72 in 645 x 436 x 43.6 mm
Weight (without packaging)	47 lbs 21.32 kg
Rail Information	Mounting rails included

## SteelConnect Analytics Software Licensing SKUs

### Ordering Guide

SDEX-ANALYTICS-080-B010	SteelConnect Analytics hardware appliance to gain insights into SteelConnect EX based enterprise SD-WAN
SEC-SDW-ANALYTICS-F-SUB	SteelConnect Analytics subscription for any size cluster with built-in HA to gain insights into SteelConnect EX based enterprise SD-WAN

### About Riverbed

Riverbed enables organizations to maximize performance and visibility for networks and applications, so they can overcome complexity and fully capitalize on their digital and cloud investments. The Riverbed Network and Application Performance Platform enables organizations to visualize, optimize, remediate and accelerate the performance of any network for any application. The platform addresses performance and visibility holistically with best-in-class WAN optimization, network performance management (NPM), application acceleration (including Office 365, SaaS, client and cloud acceleration), and enterprise-grade SD-WAN. Riverbed's 30,000+ customers include 99% of the *Fortune* 100. Learn more at [riverbed.com](http://riverbed.com).

