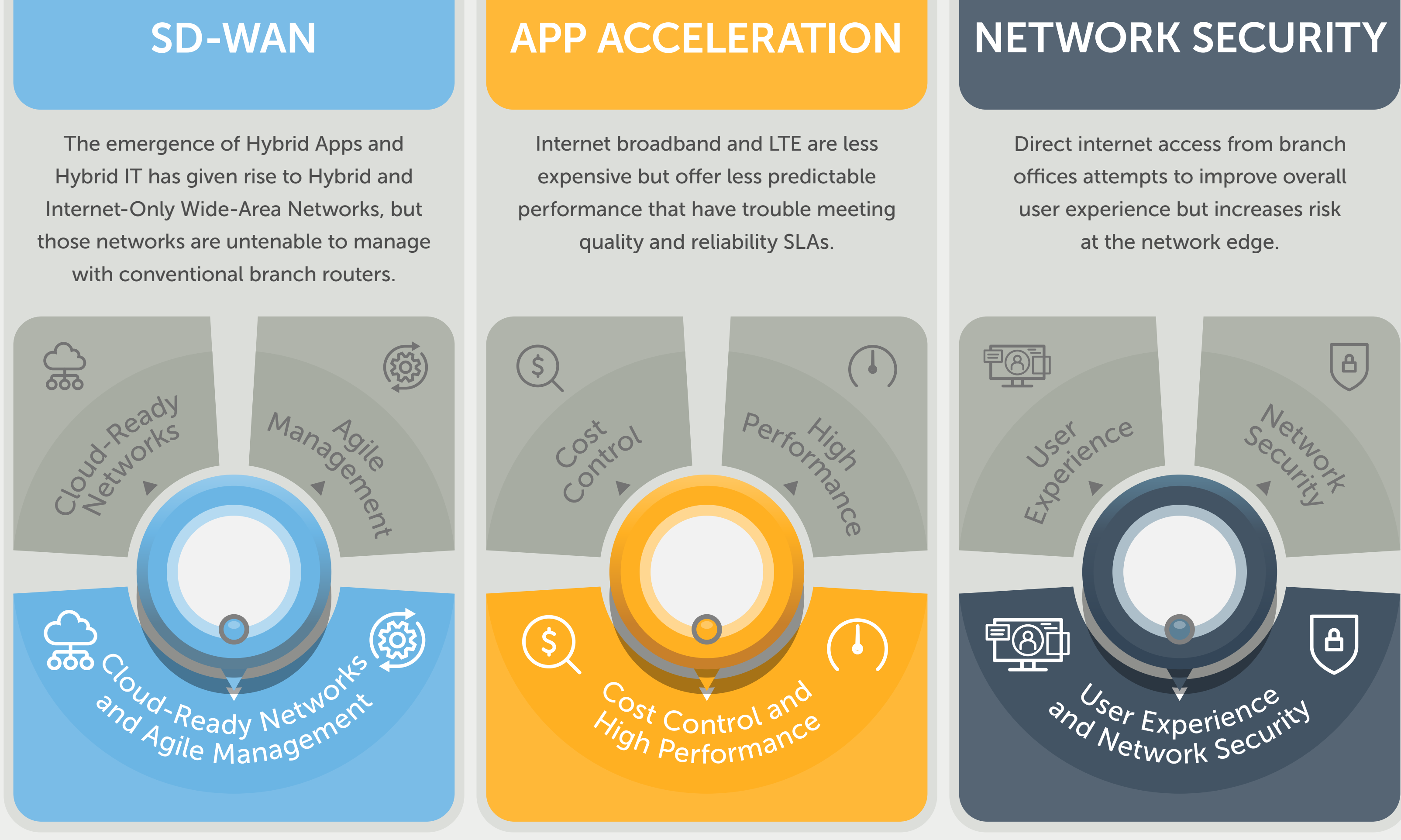


# CHOOSING SD-WAN

While every SD-WAN vendor claims to offer a solution to modernize your WAN, not all SD-WAN solutions are the same. How can you know which is best suited for your business? Can they all deliver enterprise-class networking at scale? Can they all assure exceptional performance for all applications on-premises and in the cloud? And can they deliver next-gen security to protect an expanded threat perimeter across the WAN?

You will encounter common pitfalls, trade-offs and roadblocks as you embark on choosing a vendor.

Look for a solution that can address each one...



With a complete set of capabilities, you can break through these trade-offs, without compromise!

Let's take a closer look...

## What are the Critical Capabilities You'll Need From SD-WAN, App Acceleration, and Network Security?

### SD-WAN

<h4>A Complete Routing Stack</h4> <p>Streamline SD-WAN adoption in brownfield networks</p> <ul style="list-style-type: none"> <li>Directly integrate with underlay networks, eliminate routing loops, and assure fast convergence.</li> <li>Save on operations and infrastructure costs by replacing conventional branch routers.</li> </ul>	<h4>Dynamic Link Conditioning</h4> <p>Maximize use of hybrid WAN transport</p> <ul style="list-style-type: none"> <li>Avoid the waste created by always-on packet duplication and error encoding techniques.</li> <li>Automatically turn-on and off link conditioning as circuit quality and utilization changes.</li> </ul>	<h4>Rich Network Topologies</h4> <p>Manage complex WAN architectures at scale</p> <ul style="list-style-type: none"> <li>Deliver optimal traffic flow within and across multiple regions and branches (Hub-spoke, full/partial mesh, S-HH-S, P2P).</li> <li>Implement any combination of topologies spanning 1000s of branch sites and multiple service provider networks.</li> </ul>
--	--	---

### APP ACCELERATION

<h4>WAN Optimization</h4> <p>Deliver superior WAN performance for on-prem apps</p> <ul style="list-style-type: none"> <li>Dramatically expand WAN capacity and defer circuit upgrades.</li> <li>Maximize end-to-end throughput across WAN circuits suffering from high latency, jitter and/or packet-loss.</li> </ul>	<h4>SaaS/Cloud Acceleration</h4> <p>Meet performance and user experience targets for SaaS and cloud apps</p> <ul style="list-style-type: none"> <li>Overcome unpredictable quality and high latency accessing apps hosted across the internet.</li> <li>Reduce impact of latency when backhauling internet traffic through data center.</li> </ul>	<h4>Client Acceleration</h4> <p>Accelerate app performance to work-from-anywhere laptops</p> <ul style="list-style-type: none"> <li>Deliver superior app performance to users working anywhere - at home, in taxis, hotels, airports, and coffee shops...</li> <li>Accelerate the performance of any application accessed from user laptops: SaaS, cloud, and on-prem.</li> </ul>	<h4>Visibility &amp; Analytics</h4> <p>Measure network performance for SLAs compliance</p> <ul style="list-style-type: none"> <li>Gain complete visibility into network traffic and app flows across multiple MPLS, internet broadband, and LTE circuits.</li> <li>Speed up root cause analysis and resolution with actionable insights.</li> </ul>
---	--	---	---

### NETWORK SECURITY

<h4>Advanced Native Security</h4> <p>Reduce cost and complexity with rich native capabilities</p> <ul style="list-style-type: none"> <li>Protect direct-to-internet access with Next-Gen Firewall, Next-Gen IPS/IDS, and Malware/Anti-Virus protection.</li> <li>Collapse network security, SD-WAN, and app acceleration with a unified platform.</li> </ul>	<h4>Extensible Service Chaining</h4> <p>Integrate 3rd party network security services</p> <ul style="list-style-type: none"> <li>Adopt uCPE and flexible service chaining to seamlessly integrate 3rd party security functions.</li> <li>Streamline integration with cloud-hosted security to quickly protect remote sites.</li> </ul>
--	--

## How Do SD-WAN Vendors Stack Up?

<b>riverbed®</b>	ON	ON	ON	Powerful SD-WAN integrates enterprise-class routing, industry-leading application acceleration, and advanced native security in a unified software platform.
<b>Cisco Viptela</b>	OFF	OFF	ON	A fragmented, unstable, and backward-looking offering attempts to add Viptela software to conventional ISR routers.
<b>VMWare Velocloud</b>	OFF	OFF	OFF	Pure-play SD-WAN with limited routing and app acceleration capabilities also relies on 3rd parties for security.
<b>Silver Peak</b>	OFF	OFF	OFF	Tunneled WAN Optimization recast as SD-WAN has weak routing capabilities, lacks many app acceleration functions, and falls short on native security services.
<b>Fortinet</b>	OFF	OFF	ON	Pure-play security vendor with limited SD-WAN and application performance capabilities.
<b>Palo Alto (CloudGenix)</b>	OFF	OFF	OFF	Pure-play SD-WAN for basic networks has uncertain future post acquisition by Palo Alto.

## SD-WAN ushers in a new era of network modernization

Look for a solution that provides all the capabilities you need to assure success every step of the way.

[LEARN MORE](#)