

Database Analysis Module

For SteelCentral AppResponse 11

The SteelCentral AppResponse 11 Database Analysis (DBA) module provides deep visibility into SQL database performance through real-time monitoring of a broad range of metrics, with drill-down to fine-grained forensic database transaction data for troubleshooting. It performs detailed tracking of database usage for trending and performance optimization. DBA provides high- definition analysis of database performance while offering an agentless approach that imposes zero overhead on database operation.

The Challenge

Today's enterprise can have multiple databases embedded in and supporting different applications. When you experience a database problem, without an explicit database monitoring solution, you are forced to involve your expensive database administrator to tediously review the entire database. Typically this is a time-consuming effort. If you are lucky the problem is a database problem and s/he finds it quickly. If you are not lucky, it's a network or DNS issue masquerading as a database problem and it takes months to find.

Database Analysis Module

The Database Analysis (DBA) module is an optional module for SteelCentral AppResponse11 network-based application performance monitoring. It's natively embedded into AppResponse and monitors database transactions and user activity 24x7. DBA automatically recognizes major SQL databases on all network addresses and ports and acquires database sessions, SQL queries, stats and timing info.

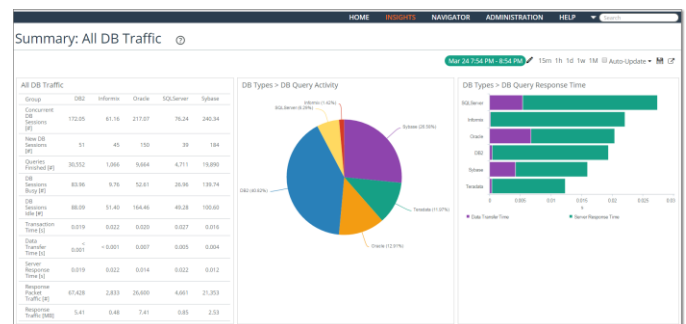


Fig. 1 – The Summary: All DB Traffic Insight shows what you would expect: a summary of all databases running on your network, query response time analysis so you can determine whether it's a network or server/database issue, and session, query and traffic statics to get you started on your root cause analysis.

With the Database Analysis module, you can analyze a specific database transaction to understand the root cause of its degraded performance. You can also identify opportunities to improve database performance, for example, aggregate tables that are frequently joined.

Benefits

The SteelCentral AppResponse Database Analysis module can detect database performance problems early, with no overhead on your application environment. You can also optimize queries and table structure to make better use of resources and speed processes. When you can't avoid serious problems, you can improve triage, isolating database-related issues faster and more accurately, and improving the hand-off to the database team.

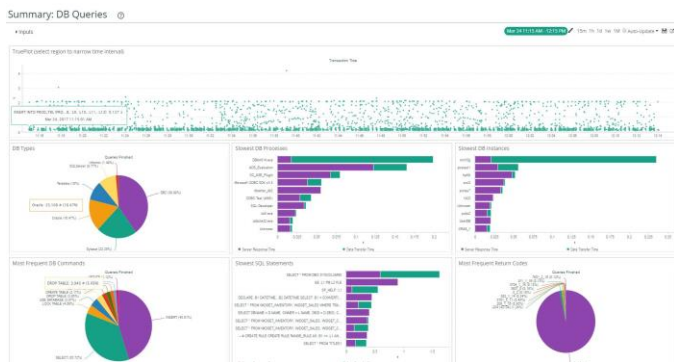


Fig. 2 This DB Query Summary Insight starts with a TruePlot chart, which shows individual query performance as individual data points for quick identification of queries whose performance was anomalous. It also shows slowest processes, instances, and commands, errors, and most frequent commands.

Key Features

- Database Support—Supports major SQL database releases:
 - IBM DB2 LUW 8.0 through 9.7
 - IBM DB2 on AS/400
 - IBM Informix 7.30 through 12.10
 - Microsoft SQL Server 2005, 2008, and 2012
 - MySQL 5.0 through 5.5
 - Oracle 8.1.7 through 11gR2
 - Sybase ASE 11.9.2 through 15.7
 - Teradata V2R5.0 through 15.10
- Agentless monitoring—High-definition data with zero overhead and without database logging
- High volume, real-time analysis scales to large database environments
- Auto discovery—Automatic recognition of databases on all network addresses and ports
- Packet Decoding—Layer 7 packet decoding to acquire database sessions, SQL queries, stats and timing info
- SQL Parsing—Full text parsing and standardization of every SQL query
- Data Management—Multi-key access to database sessions and SQL queries
- Query Analysis—Measure performance for specific database queries, tables, and columns.
- Throughput—Track throughput in terms of database calls, transactions, rows, bytes, and active sessions.
- Violations—Detects database policy violations, such as unauthorized access and suspicious usage patterns

About Riverbed

Riverbed, at more than \$1 billion in annual revenue, is the leader in application performance infrastructure, delivering the most complete platform for the hybrid enterprise to ensure applications perform as expected, data is always available when needed, and performance issues can be proactively detected and resolved before impacting business performance. Riverbed enables hybrid enterprises to transform application performance into a competitive advantage by maximizing employee productivity and leveraging IT to create new forms of operational agility. Riverbed's 28,000+ customers include 97% of the *Fortune* 100 and 98% of the *Forbes* Global 100. Learn more at Riverbed.com/SteelCentral.

